

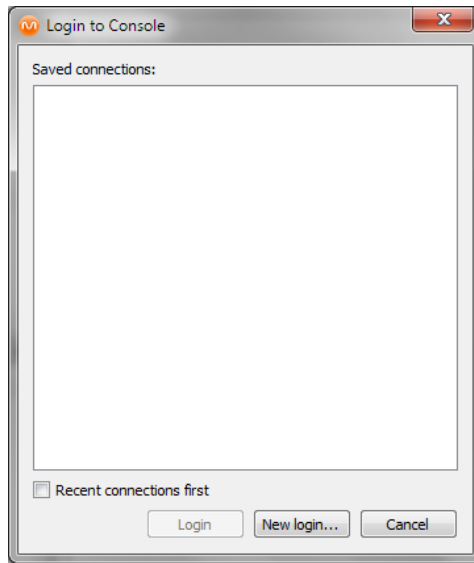
Installation Instructions for Backup Manager and Cloud Management Console

Installing the software components for Sterling Data Storage (SDS) is quite simple. There are two components that must be installed: The Backup Manager (client software) and the Cloud Management Console (CMC.) The Backup Manager must be installed on every computer that will be backed up. The CMC will be installed on any computer(s) from which you wish to administer your backups or your clients' backups. There is no problem installing the Backup Manager and the CMC on the same computer.

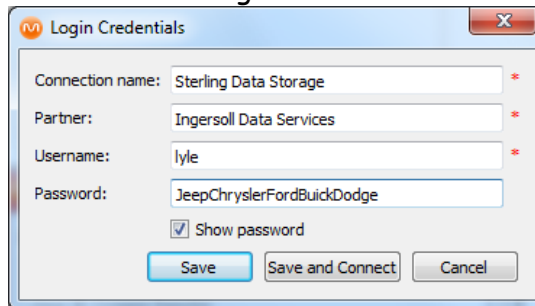
*NOTE: If you are a VAR or SDS reseller, it is recommended that you **DO NOT** install the Cloud Management Console on any of your clients' computers or servers. Doing so will allow your clients to monitor and possibly tamper with backups belonging to other clients.*

1. Browse to <http://sterlingdatastorage.com/download/> and download the appropriate files for the computers being backed up
 - a. Under Backup Manager, select the appropriate platform file and download it onto each computer that will be backed up.
 - b. Under Cloud Management Console download the appropriate platform file and download it onto the computer(s) from which you will be managing your backups. The CMC can reside on a workstation or a server - it makes no difference. The CMC can reside on a computer that is also running the Backup Manager.

2. Install and configure the CMC first.
 - a. Run the downloaded Cloud Management Console installation file.
 - b. Upon completion of the installation, an icon will be placed in the start menu for Cloud Management Console. Start the program from the Start Menu icon.
 - c. Click the Actions menu and select Connect...



- d. Click the New Login... button

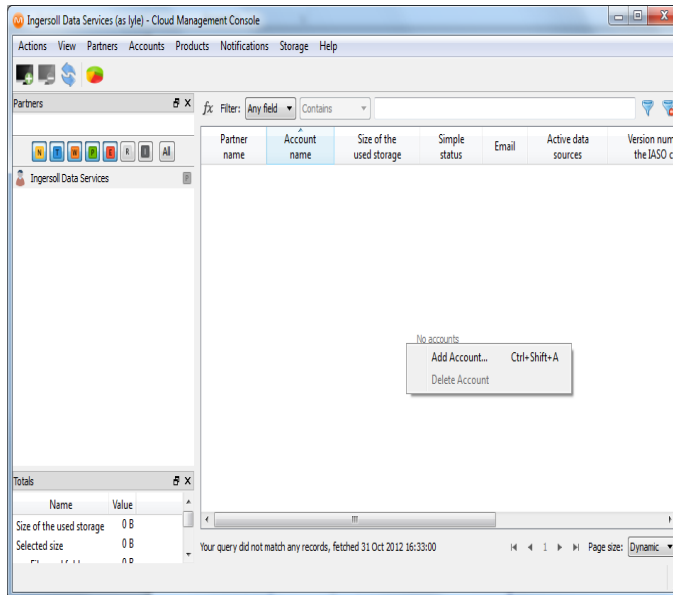


- e. Connection Name - Name it Sterling Data Storage.
 - f. Partner is in the E-mail from Sterling Customer Support
 - g. Username is in the E-mail from Sterling Customer Support
 - h. Password is in the E-mail from Sterling Customer Support

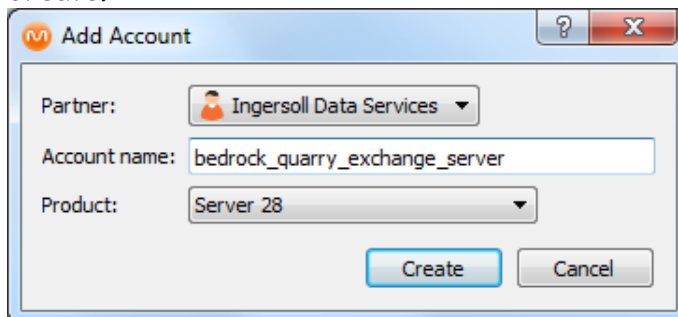
- When the CMC displays, click the Hide/Show Pie Chart button on the toolbar



- Once the Management Console is installed, right click in the right-hand window and select Add Account.



- Type in appropriate information for the computer you'll be backing up. Be sure to select the appropriate product - Server 28 or Workstation 28. Click Create.



- The account information screen is now displayed and you can see the system-generated password. The password cannot be changed. Click Save.

Account Information

General Additional

Partner: Ingersoll Data Services

Account name: bedrock_quarry_exchange_server

Password: 3a12a572593d

Product: Workstation 28

Creation time: Wed Oct 31 16:39:29 2012

Expiration date: Unlimited
31 Oct 2012

Save Cancel

- You will now see the newly created account displayed in the CMC.

Ingersoll Data Services (as tyle) - Cloud Management Console

Actions View Partners Accounts Products Notifications Storage Help

Partners

fx Filter: Any field Contains

Partner name	Account name	Size of the used storage	Simple status	Email	Active dat sources
Ingersoll Data Services	bedrock_quarry_exchange_server				

Totals

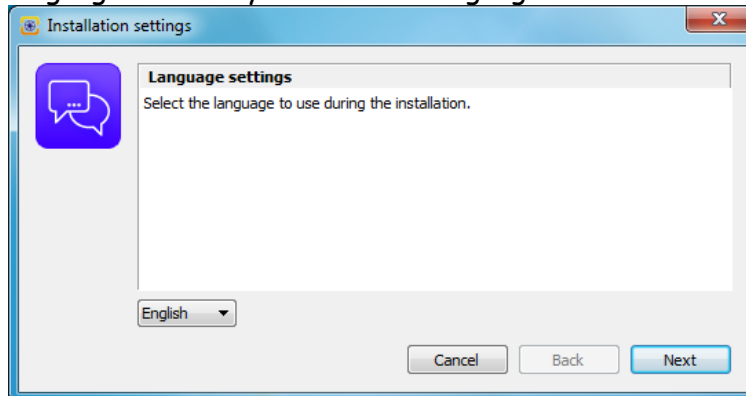
Name	Value
Size of the used storage	0 B
Selected size	0 B
	0 B

Results: 1-1 of 1, fetched 31 Oct 2012 16:44:32

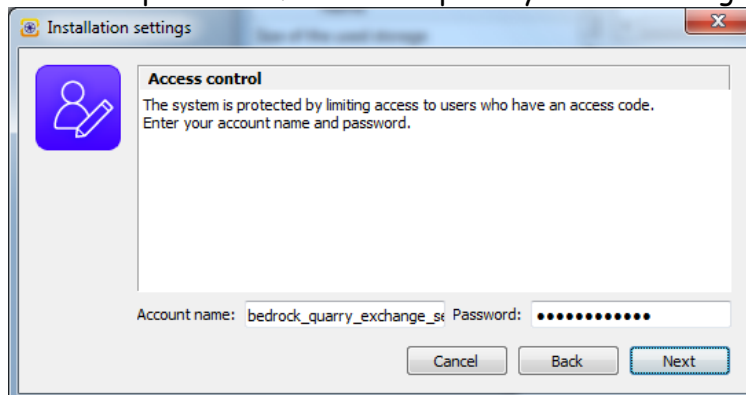
Page size: Dynamic

You are finished with the installation of the Management Console.

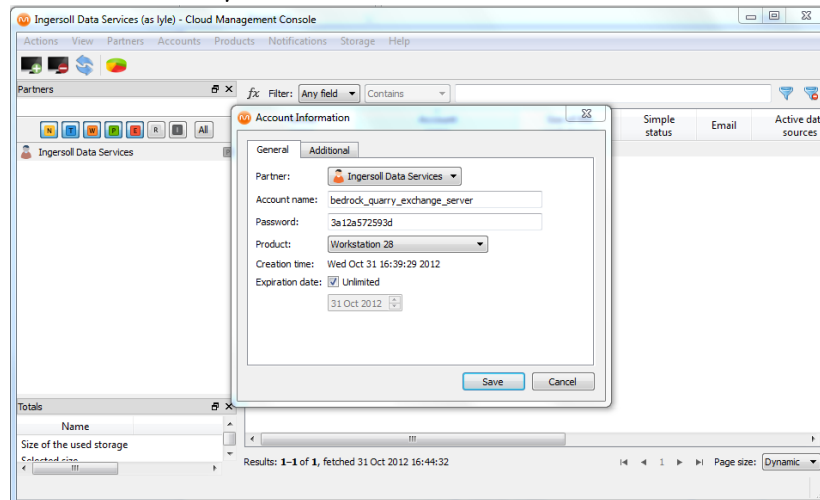
8. On the computers that you will be creating backups for, install the Backup Manager software that you downloaded in Step 1. Run the installation file on each computer you will be backing up.
 - a. The first screen of the installation wizard asks for your desired language. Select your desired language and click Next



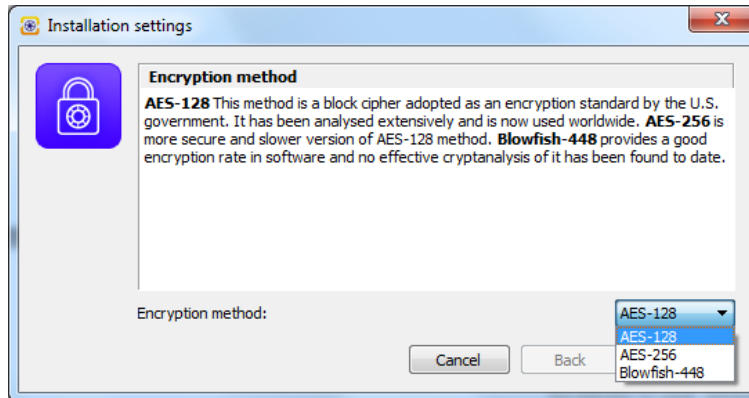
- b. The next step of the installation wizard prompts you for the user name and password for the computer you're installing.



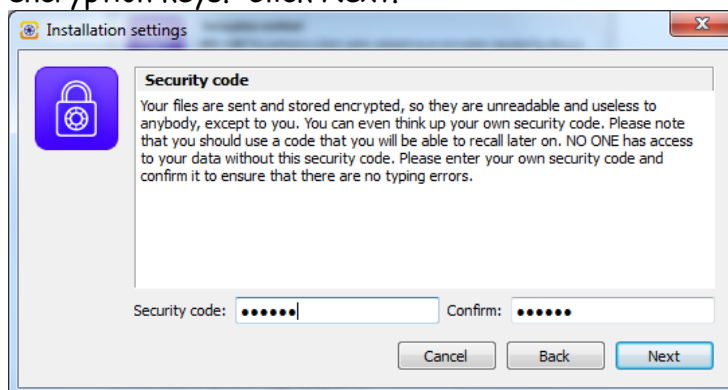
- i. User name and Password are found in the CMC by right-clicking on the account name and selecting Modify account... Use copy & paste to easily fill in the fields in the Backup Manager wizard. After filling in the User name and Password fields, click Next.



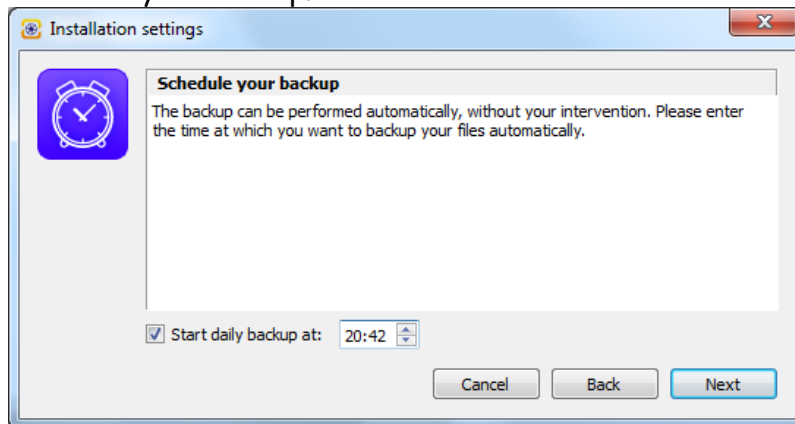
- c. When prompted to create an encryption key, you will select your own encryption method and encryption key. Most users select AES-128 as their encryption method. However, you may also select AES-256 or Blowfish-448. Click Next.



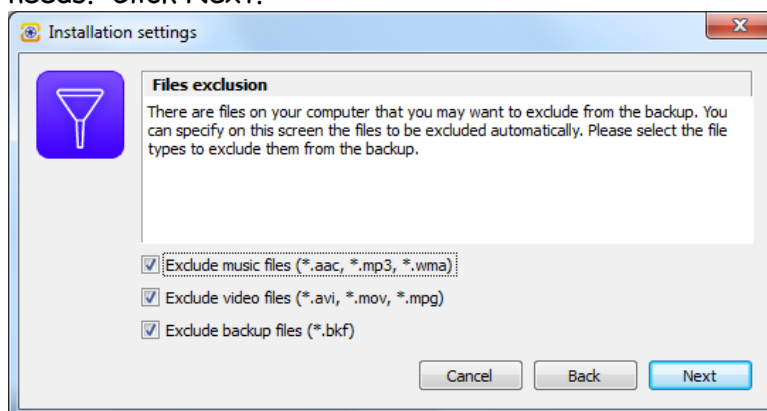
- d. You are now prompted to create an encryption key for this account. **DO NOT LOSE THE KEY YOU SELECT** or you will not be able to restore backups. Sterling Data Storage does not have access to your encryption keys. Click Next.



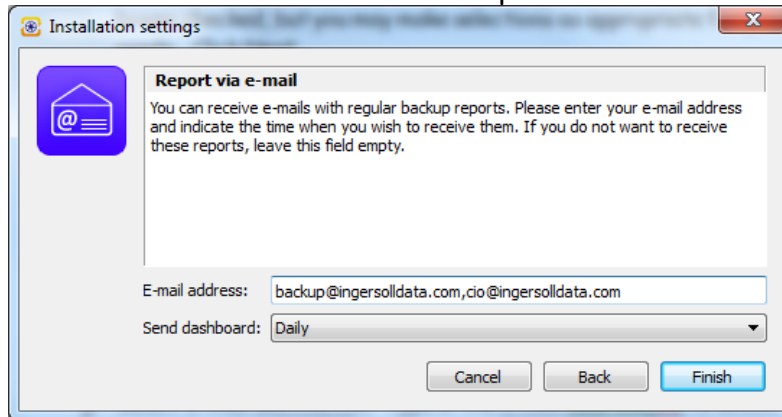
e. Schedule your backup.



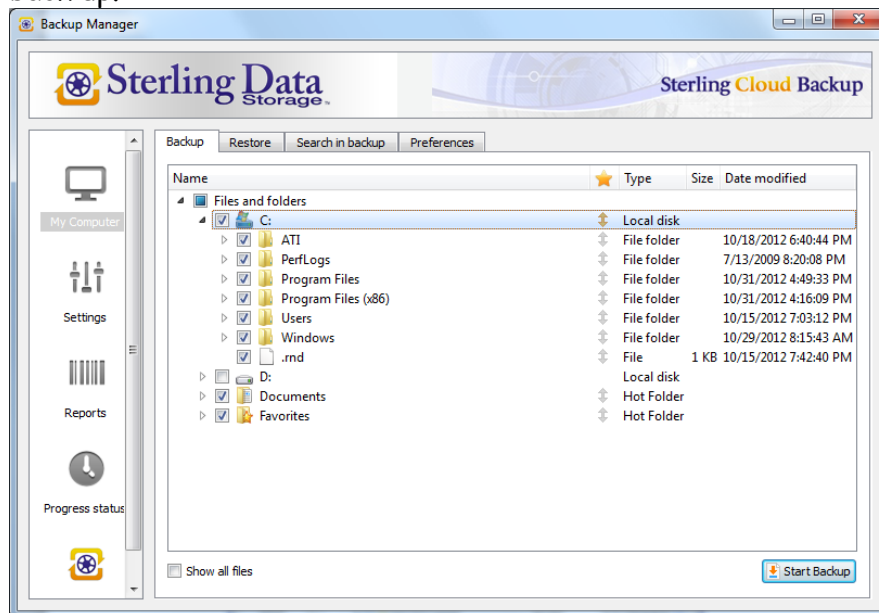
f. Select the desired file exclusions. The majority of users leave all boxes checked, but you may make selections as appropriate for your needs. Click Next.



- g. Select E-mail destination. Type in the E-mail address(es) to which you wish to have backup reports sent. You can also select the frequency with which backup reports are sent. Most users opt for daily reports. If you wish to use multiple E-mail addresses, separate each address with a comma and no space. Click Finish.



9. The Backup Manager should now be displayed on the screen. If not, there is a Backup Manager icon in the Start menu. Select the folders you wish to back up.



10. Please take 30 minutes or so to familiarize yourself with the features of the Backup Manager software. The SDS backup program is easy to use and very powerful, but proficiency will come through familiarization and practice. SDS technical support is also available via the SDS website at <http://sterlingdatastorage.com/support/>.

11. If you have a large data set to be backed up (say, 100+ GB) you may wish to consider taking an initial local backup to an external hard drive and then shipping it to the SDS data center. Please contact SDS technical support if you wish to explore this option. The document **How to Setup and Perform Initial Offline Backup.pdf** is available for download at <http://sterlingdatastorage.com/reseller-login/>.